

Who Needs GeoHawk?

GeoHawk was designed with simplicity in mind. Although anyone can use GeoHawk, it is targeted for people whose responsibilities are result-oriented such as in *sales, marketing, customer services, engineering, operations, construction, economic development, management, and other business areas which do not require GIS technical skills.*

GeoHawk's easy-to-use view, locate, query and red-lining functionality allows your company's producers and decision-makers to quickly obtain information to manage assets, improve customer service, plan your business, and target costs.

GeoHawk broadens the possibilities for those who previously were unable to have fast access to GIS information.

GeoHawk brings this possibility to your desktop or field unit, so you can have the information at your fingertips.

GeoHawk is a small footprint application designed to provide GIS mapping to view users, as well as non-traditional users.



12446 Willingdon Road
Huntersville, NC 28078
888.635.1905



GEOHAWK 5.0

Highlights

I. Flexibility

- GeoHawk is an ideal candidate for a mobile mapping application.
- GeoHawk can be used on CD, local hard drive, LAN, WAN, or the Internet.

II. Affordability

- No Annual Licensing Fees.
- More affordable than the competition.
- GeoHawk pays for itself by reducing the need for required high-end GIS desktop licenses.

III. Configuration

- GeoHawk can be configured for your data.
- GeoHawk can be configured for client's specific needs.

IV. Formats

- GIS formats
 1. ArcInfo™ coverages
 2. ESRI® Shapefiles
- Computer-aided design (CAD) formats
 1. DXF™
 2. DWG

- Image formats

1. GeoTIFF
2. JPEG
3. ERDAS IMAGINE®
4. TIFF
5. MrSID™ image compression

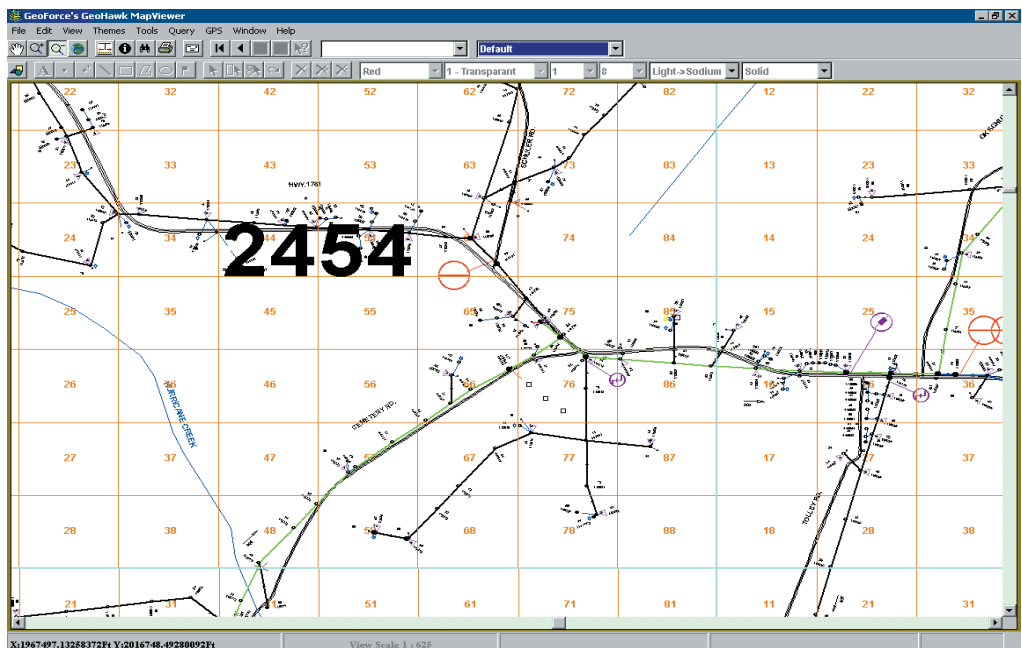
- ArcSDE™ (Spatial Database Engine™)

V. Functionality

- Description of icons (all with a look and feel of Microsoft® Windows®. See other side.)

VI. System Requirements

- GeoHawk can operate on any Win 32-bit computer, including 95/98/NT/2000.
 1. 32 MB RAM
 2. 5 MB disk space
 3. Mouse
 4. Graphics Board
- Technical support, training, and upgrades available.
- Annual Support Agreements available.





1. Map Toolbar

- Pan** - allows operator to drag the map in any direction
- Zoom In** - to get a closer look at the map
- Zoom Out** - to get a further look at the map
- Full Extent** - takes you to the highest-level view you can get to
- Move First** - takes you to the map that appeared first when you started GeoHawk
- Move Previous** - will take you to the map you viewed last
- Move Next** - will take you to the next map that you viewed
- Move Last** - will take you to the last map you have viewed
- Move Query** - becomes enabled when the Find Tool is used to go to a map
- Bird's Eye Map** - enables operator to move to or zoom to any part of map by dragging a rectangle in the Bird's Eye Map

2. Graphic Toolbar

- Custom Point** - allows the user to insert the correct mapping symbol onto the screen when making changes - symbols are taken directly from the users data
- Rotate** - once a graphic is selected, it can be rotated 360 degrees
- Delete** - allows the operator to delete graphics, text, or anything selected
- Color** - applies to all graphic types (text, lines, flags, and outside lines and fill colors of rectangles, polygons, and ellipses)
- Fill** - applies to the interior style of rectangles, polygons, and ellipses.
- Width** - applies to the size of points, widths of lines, and outside width of rectangles, polygons, and ellipses.
- Font Size** - applies to the size of text and flags.

- Measurement Tool** - enables you to determine the length (in feet or meters) of a line on the map
- Draw Text** - to draw text on the map
- Draw a Point** - to draw a point on the map.
- Draw a Line** - to draw a line.
- Draw a Rectangle** - to draw a rectangle on the map.
- Draw a Polygon** - to draw a polygon on the map.
- Draw a Circle** - to draw a circle.
- Draw a Flag** - simply click on the map where you want the flag to appear.
- Selecting Existing Graphics** - in order to modify its color, size, fill style, or location.
- Moving Graphics** - once a graphic is selected, it can be moved by dragging the graphic.

3. Information Tools

- Identify** - allows the operator to select a point on the map and see the associated attributes of each of the features that contain that point.
- Query/Find** -
 - a. Selective Query** - allows the operator to select any feature in the data set and search on an attribute or for a feature such as "County". Option to zoom to a feature in the Query results.
 - b. Spatial Query** - allows the operator to draw a polygon around the area they wish to query, limiting the features inside the polygon.
 - c. Common Query** - this option stores queries that are used most often and access them with little effort.
 - d. Drawing Applications** - this function will draw data based on certain attributes(i.e. size, pressure, phase, existing, proposed).

4. Output Tools

- Printing the Map** - print the maps you are looking at on your default printer in either landscape or portrait.
- Sending your map to MS Word** - this function enables you to add notes to any document and change any formatting around the graphic map. The operator can also save the map in a Word document, in order to view at a later time.
- E-mail** - from MS Word, select Send To > Mail Recipient as Attachment from the File Menu.

5. Controlling the Map

- Object Tree Control** - provides an easy way to turn the visibility of individual groups or features on and off.
- Standard Object Settings** - customized for client
- Map Tips** - select a visible feature's attribute category and simply hover over a feature on a map and the attribute data will appear
- Using the Applications or Themes** (with color legend) - for example, *Color By Size*.

